

BOSTON PARK PLAZA



Boston's Most Beloved Meeting Destination

Boston's largest independent hotel and the city's premiere meeting and event venue lovingly restored following a \$100 million renovation. Savor an unrivaled experience complete with creative cocktails in the dramatic lobby, exquisite fine-dining at STRIP by Strega, state-of-the-art 20,000 sq. ft. Lynx Fitness Club featuring Boston's only Topgolf Swing Suite and an unbeatable location, steps from Boston Common.

America's First Grand Hotel

- Construction on the Boston Park Plaza Hotel began in 1925. E.M. Statler, a visionary in hospitality and business, opened the hotel on March 10, 1927 as "The Statler Hotel."
- Statler proposed the hotel as a "city within a city," opting to construct a multi-purpose hotel and office building to ensure a dependable flow of revenue.
- By the time construction on the hotel was completed, craftsmen had used 5 million bricks, 2 acres of glass, 10 acres of carpeting, 7,000 doors, 200 miles of molding, and 16 million pounds of steel. The project cost Statler \$14 million dollars.
- When the hotel opened room rates ranged between \$3.50 and \$5.00.
- With its original 1,300 guestrooms, the Boston Statler was the largest hotel in all of New England for five decades and 8th largest hotel in the World.



A City within a City

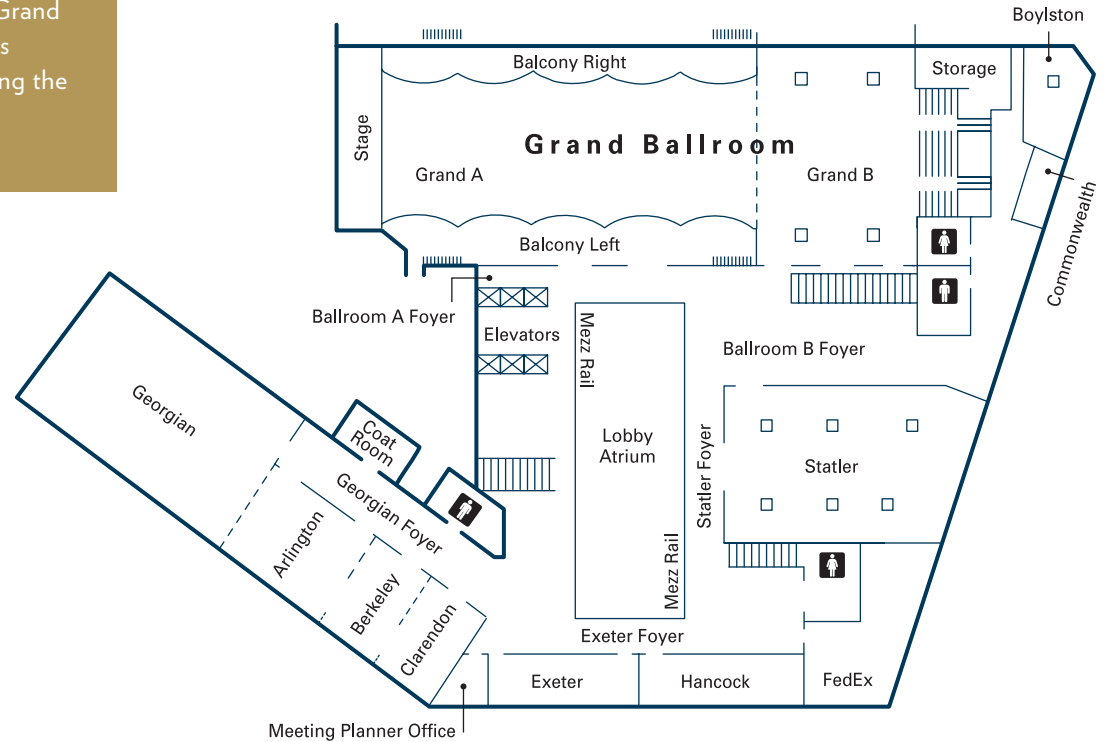
- The entire third floor was devoted to the living and dining quarters of the hotel staff.
- On the 14th floor was a renowned hospital complete with an operating room and a Nose and Throat Department.
- The basement housed the largest barber shop in New England. It boasted 30 chairs and the most advanced equipment in the industry, including special facilities to sterilize each brush.
- On the roof was a penthouse with two floors for service functions, including a print shop for the production of menus and incidental house literature, a carpenter shop and an upholsterers shop.
- The hotel's penthouse also featured a radio broadcast station, from which Boston radio station WBZ was broadcasted.



Mezzanine Level

SECOND FLOOR

The Mezzanine Level features most of the hotel's larger meeting spaces including the iconic Grand Ballroom, as well as generous pre-function areas overlooking the beautiful lobby.



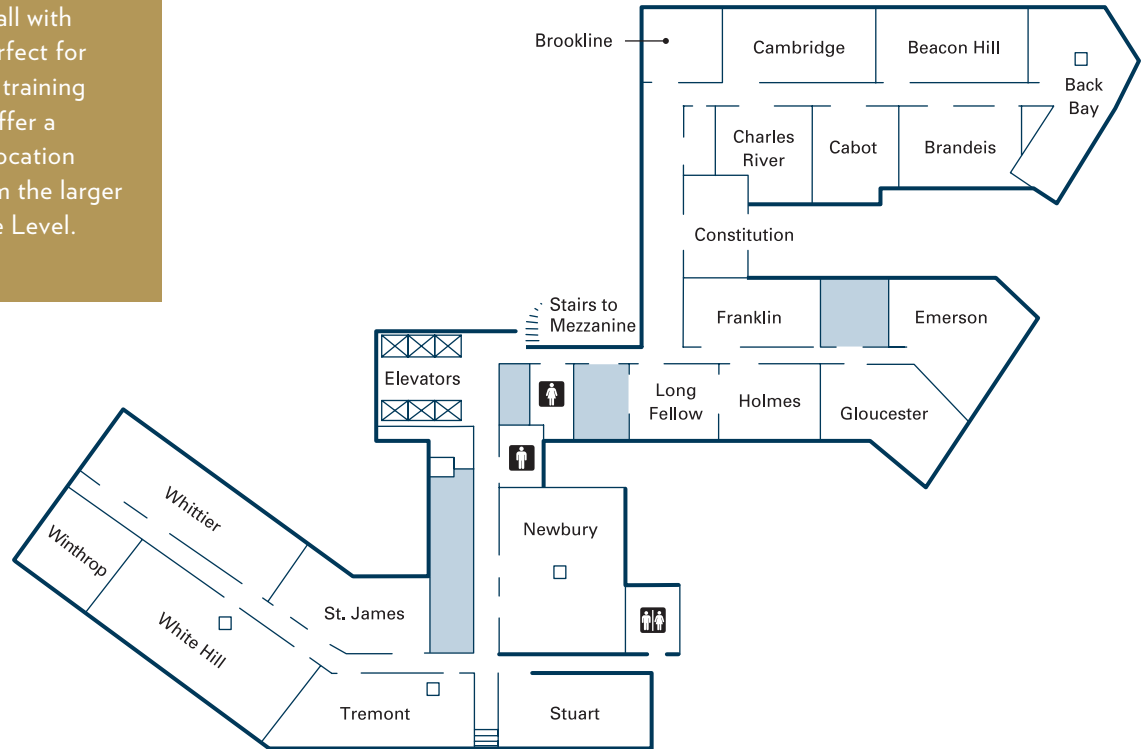
ROOM	SQ. FT.	DIMENSIONS	CEILING HT.	THEATER	BANQUET	CLASSROOM	RECEPTION	CONF.	U-SHAPE
Grand Ballroom A & B*	13,215	180' x 73'	30'4"	1,130	780	597	2,200	166	171
Grand Ballroom A*	8,516	116' x 73'	30'4"	770	500	400	1,600	106	114
Balcony Left	1,430	110' x 13'	19'1"	40	20	-	-	-	-
Balcony Right	1,430	110' x 13'	19'1"	60	30	-	-	-	-
Stage	1,242	23' x 54'	-	-	-	-	-	-	-
Grand Ballroom B	4,699	64' x 73'	21'5"	342	250	198	600	70	63
Georgian	4,021	82' x 49'	13'10"	400	270	231	500	76	84
Arlington	1,402	42' x 33'	10'7"	143	120	72	200	40	42
Berkeley	748	22' x 33'	10'7"	70	50	42	100	30	27
Clarendon	732	22' x 33'	10'7"	70	50	42	100	30	27
Arlington, Berkeley, Clarendon	2,981	85' x 33'	10'7"	283	240	156	400	100	96
Georgian, Arlington, Berkeley, Clarendon	7,041	173' x 49'	10'7"	683	510	387	900	176	180
Boylston	1,210	45' x 37'	15'0"	84	70	54	120	28	27
Commonwealth	420	14' x 31'	15'0"	28	20	15	30	28	15
Exeter	560	40' x 15'	10'0"	60	30	24	50	30	27
Hancock	588	41' x 14'	11'9"	49	30	24	50	30	27
Statler	3,997	53' x 92'	9'11"	288	240	183	420	64	60

* The height from the floor to the bottom of the chandeliers is 14'10"

Conference Level

FOURTH FLOOR

The Fourth Floor offers twenty smaller meeting rooms, all with natural light, that are perfect for breakouts, seminars and training sessions. These rooms offer a convenient centralized location that is easy to reach from the larger rooms on the Mezzanine Level.



ROOM	SQ. FT.	DIMENSIONS	CEILING HT.	THEATER	BANQUET	CLASSROOM	RECEPTION	CONF.	U-SHAPE
Back Bay	1,292	38' x 34'	8'6"	80	80	48	80	34	30
Beacon Hill	850	23' x 43'	8'6"	71	50	48	75	34	36
Brandeis	446	13' x 35'	8'6"	20	20	15	25	16	-
Brookline	396	20' x 23'	8'6"	28	20	15	30	12	-
Cabot	529	20' x 29'	8'6"	40	30	24	45	20	18
Cambridge	892	23' x 44'	8'6"	69	50	48	75	34	36
Charles River	515	19' x 29'	8'6"	44	40	24	45	20	18
Constitution	446	15' x 33'	8'6"	30	30	18	40	16	15
Emerson	398	19' x 26'	8'6"	23	20	12	30	12	15
Franklin	727	18' x 48'	8'6"	57	40	30	60	28	21
Gloucester	471	19' x 33'	8'6"	36	30	15	44	20	15
Holmes	334	15' x 25'	8'6"	20	20	12	32	10	-
Longfellow	284	14' x 22'	8'6"	19	20	12	25	10	-
Newbury	871	29' x 30'	8'6"	58	50	36	60	28	24
St. James	767	15' x 48'	8'6"	46	30	36	55	30	24
Stuart	731	13' x 40'	8'6"	54	40	33	65	30	24
Tremont	1,089	18' x 54'	8'6"	70	50	54	75	40	36
White Hill	1,203	15' x 68'	8'6"	80	60	60	95	40	36
Whittier	1,215	22' x 65'	8'6"	80	60	60	95	40	36
Winthrop	498	23' x 26'	8'6"	39	30	18	45	22	-

Lobby Level

AVENUE 34

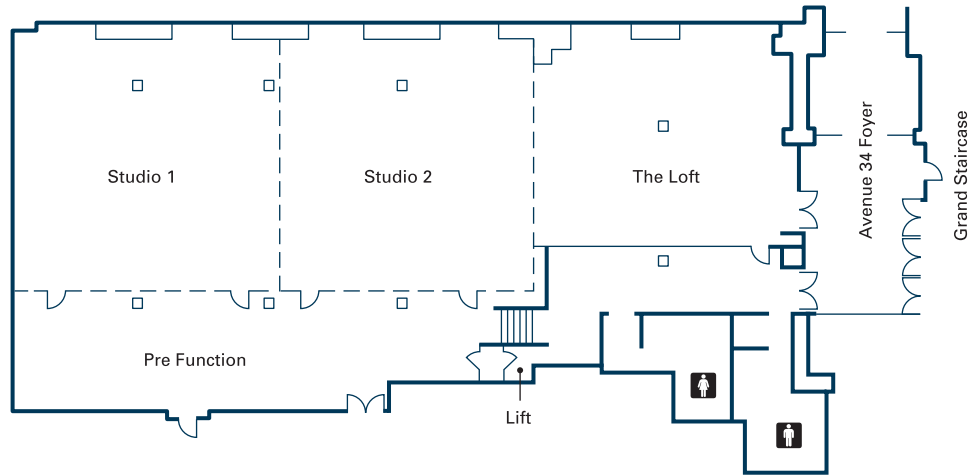
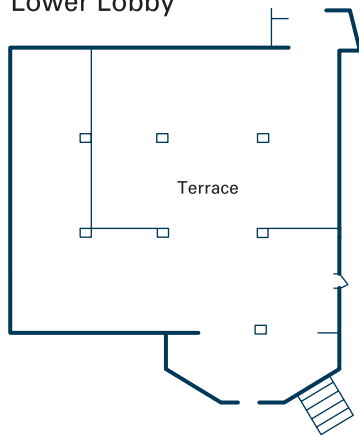


AVENUE 34

Featuring more than 7,000 square feet that can be used in its entirety or divided into three distinct spaces, Avenue 34 can provide multiple environments to suit your needs.

Avenue 34

Lower Lobby



- With its entrance on Columbus Avenue, Avenue 34 offers guests privacy and exclusivity. At the same time, the space is easily accessible to the Mezzanine and ballroom event space via the Grand Staircase or lobby stairs.
- A unique city vibe that features exposed beams and ductwork, tasteful industrial finishes and urban inspired artwork.
- Cutting edge smart technology and integrated charging spaces throughout the environment.
- Large floor-to-ceiling windows bring the cityscape into the experience and fill the space with beautiful natural light during the day.

ROOM	SQ. FT.	DIMENSIONS	CEILING HT.	THEATER	BANQUET	CLASSROOM	RECEPTION	CONF.	U-SHAPE
Avenue 34	7,315	131' x 64'	14'	582	470	242	640	70	69
Studio 1	1,892	44' x 43'	14'	205	170	86	235	26	34
Studio 2	1,849	43' x 43'	14'	187	170	86	235	26	34
The Loft	1,656	44' x 36'	11'	142	130	70	170	26	31
Pre Function	1,596	46' x 21'	14'	-	-	-	-	-	-
Terrace	5,330	65' x 82'	10'5"	300	250	150	400	30	27

Boston Park Plaza at a Glance

Total Guest Rooms: 1,060

Meeting Rooms: 35

Total Meeting Space: 55,000 sq. ft.

Largest Meeting Space:
Grand Ballroom 13,215 sq. ft.

Largest Meeting Capacity: 1,130

Last Renovated: 2016, \$100M
Completed June 2016

Convenient location near Boston
Logan International Airport and Boston
Convention Centers

Steps away from Boston Common and
many of the city's best shops, restaurants
and attractions

